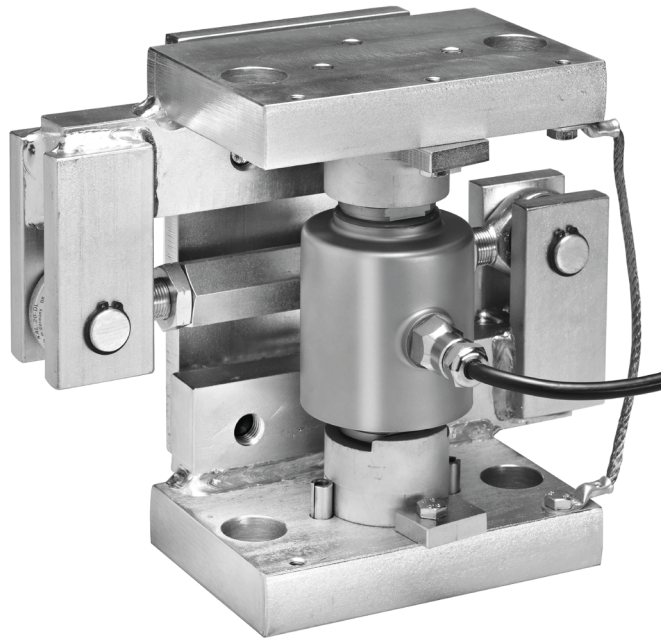


55-30 weigh module



product description

Flintec load cell supports are designed to prevent unwanted forces from affecting load cell performance.

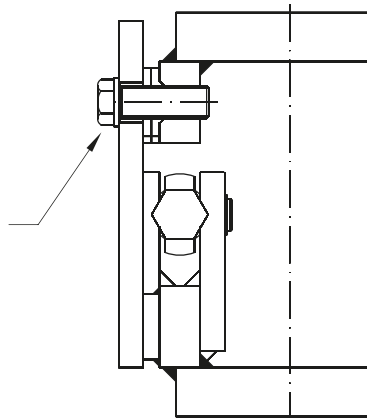
The 55-30 is a self-aligning weigh module, with excellent load introduction. The module is especially designed for the 30t and 40t RC3 load cells in hopper and tank weighing applications and incorporates an integrated check link to eliminate oscillations caused by slow moving agitators. The weigh module will be shipped completely pre-assembled including a transportation lock; ready for installation by welding or bolting.

applications

Hopper and tank weighing systems with agitators.

module assembled for shipment and installation

Transportation lock for shipment (2x)



key features

Zinc plated steel; alternatively, stainless steel

Capacities 30t and 40t

Built-in check link

Very easy to install

Very rugged

Especially designed for hopper and tank weighing with slow moving agitators

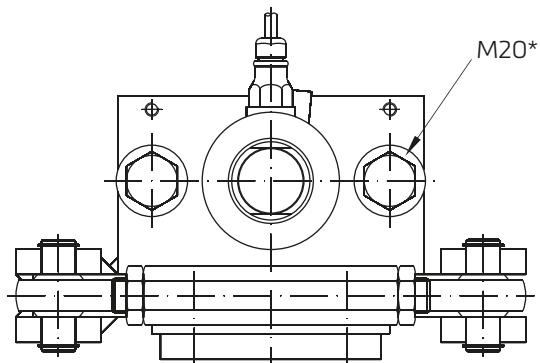
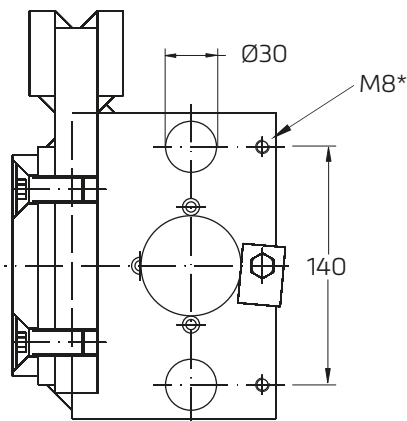
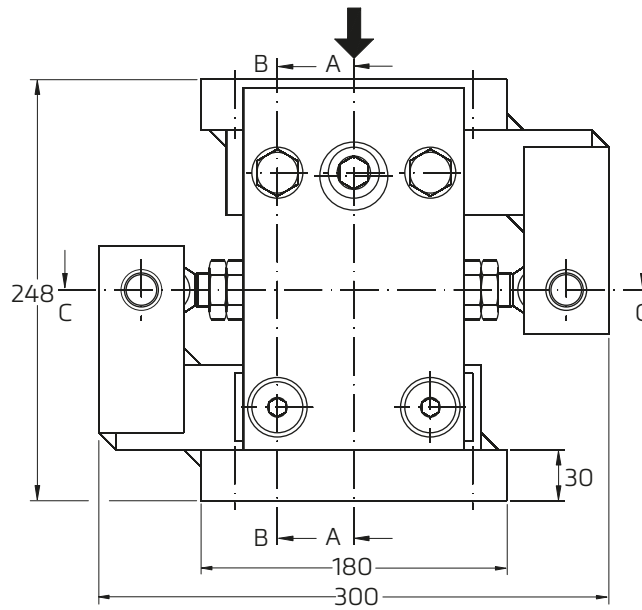
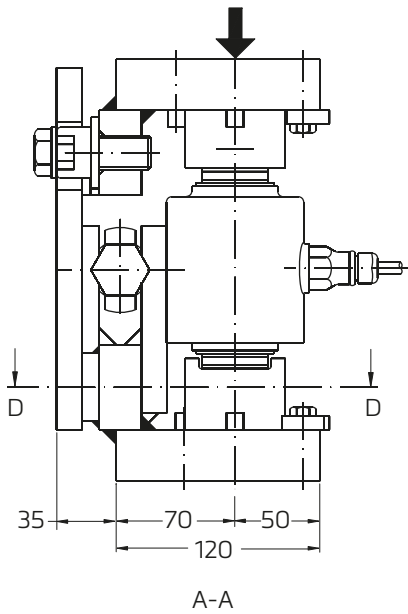
Integrated lift-off protection

Load cell replacement requires minimum lifting height

RoHS
compliant

 **flintec**
quality + precision

product dimensions (mm)



D-D

M8* - for ground strap
M20* - bolts not included in delivery

notes

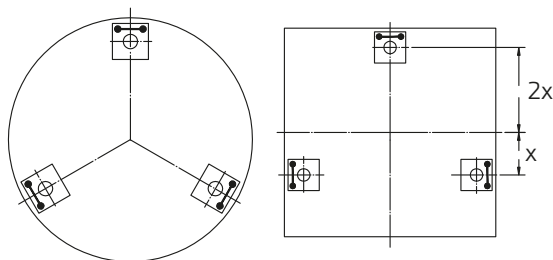
- Tank foot and foundation plate to be horizontal:
-within 0.4/100 for legal for trade applications,
-within 0.8/100 for general applications.
- Maximum force on check link: 50kN.
- Maximum force on lift off protection: 100kN.
- Total weight: 25kg, m lined up.

remark

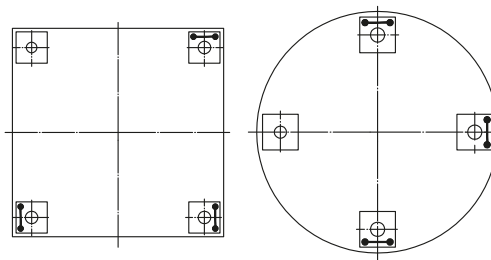
Welding instead of bolting is a very practical alternative eliminating problems of getting holes on top and bottom lined up.

CAD files for customer's own application drawings are available for download from the Flintec homepage.

check link orientation

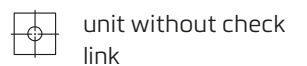


3 load cells



4 load cells

Drawing symbols



Dimensions and specifications are subject to change without notice.